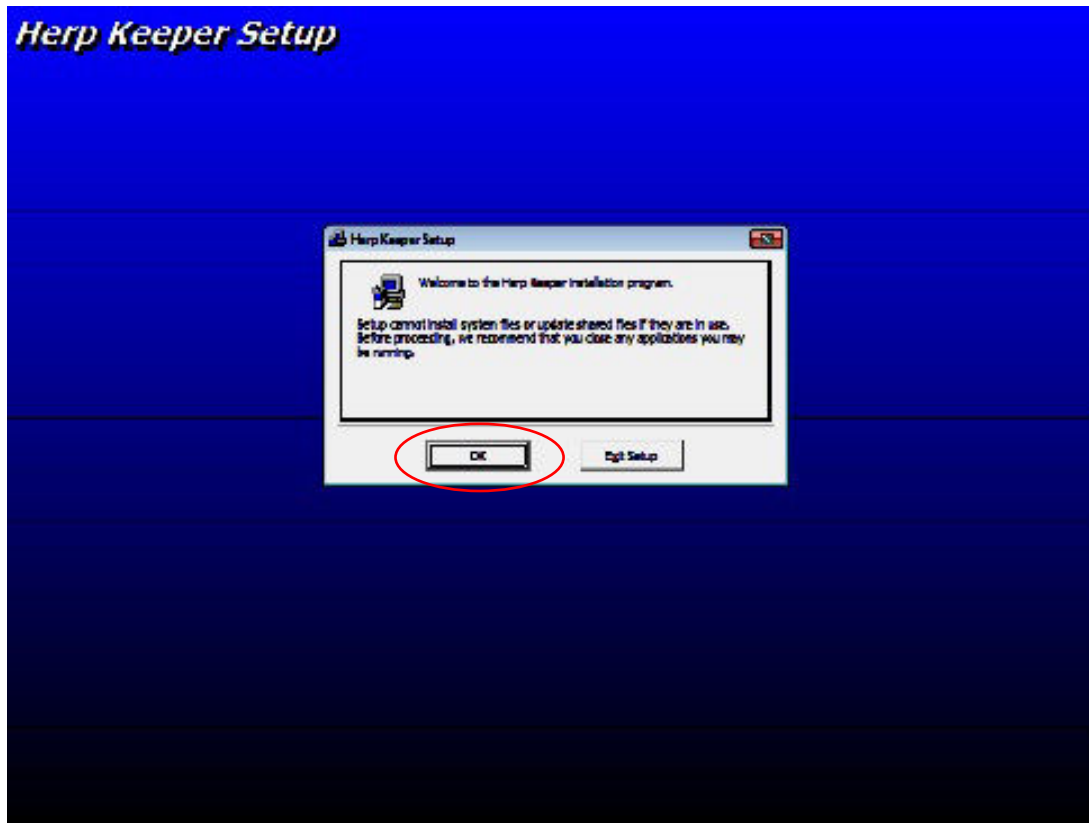


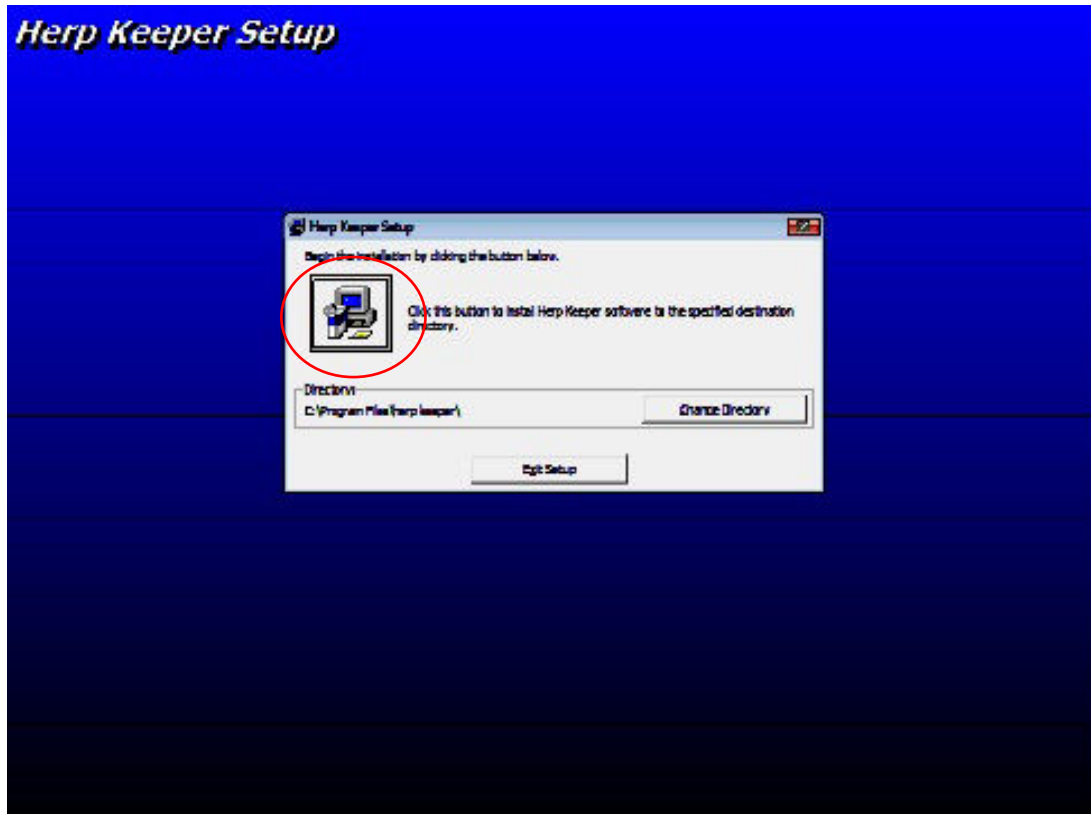
Installation instructions for Windows XP

Run the SETUP.EXE file.

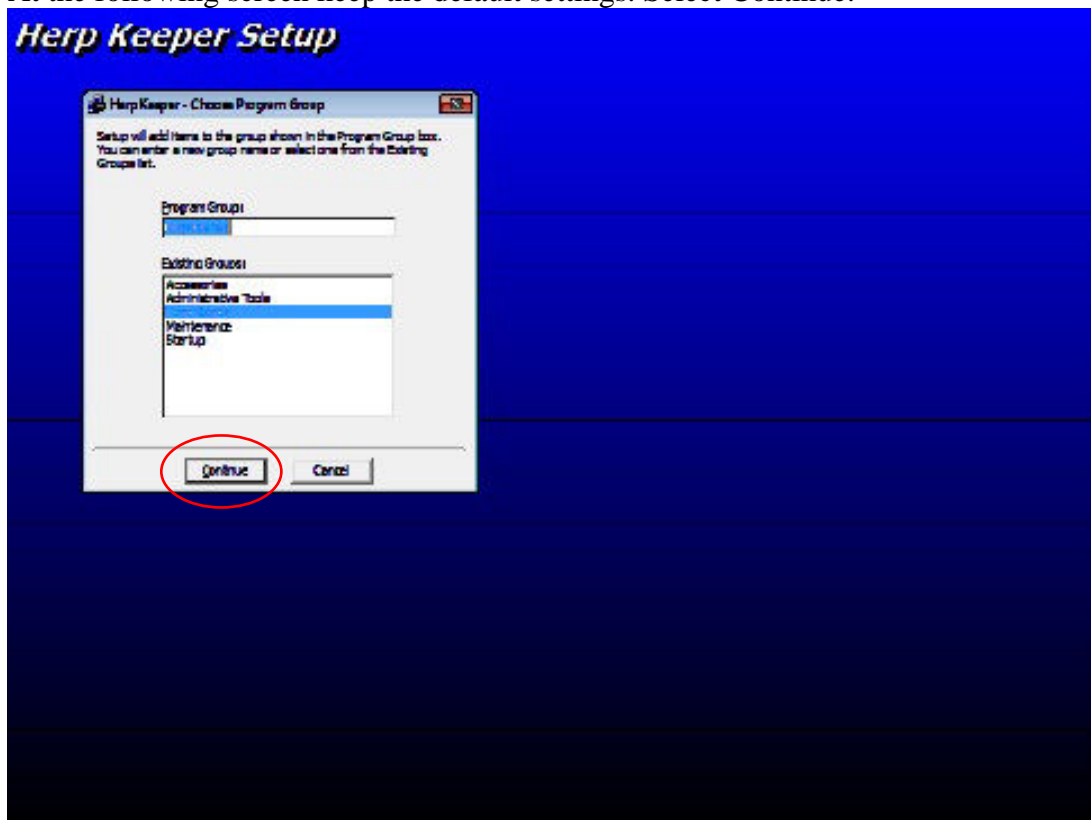
The installation will then begin. The following screen will appear to which you select OK.



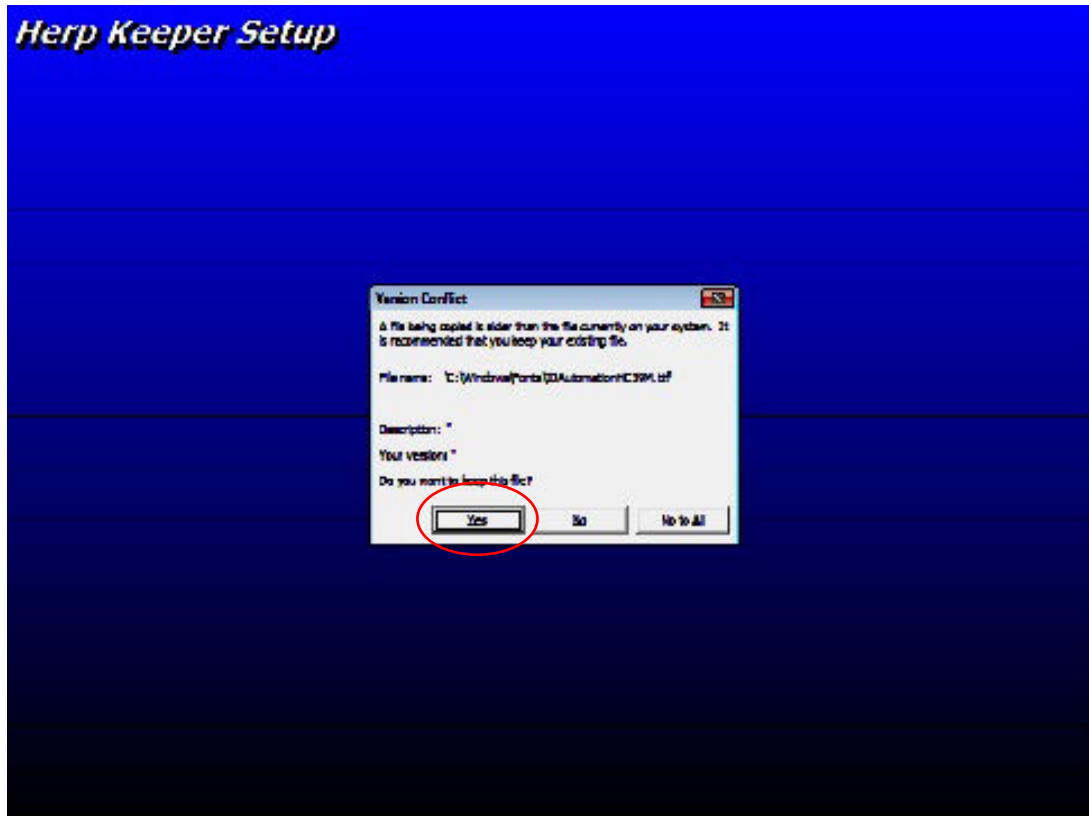
The following screen appears to which you select the button with the computer on it. DO NOT change the default Directory (This will stop the program from functioning)



At the following screen keep the default settings. Select Continue.



If the following screen appears then select Yes. It means you already have some of the files required to run the software and those files are newer. (You may see this a few times with different files)



The next screen that appears will tell you that the software has been installed.

YOU MUST NOW RESTART YOUR COMPUTER.

THE PROGRAM WILL NOT RUN CORRECTLY UNTIL THE RESTART HAS BEEN COMPLETED.